

Nová legislativní úprava vydávání Osvědčení o registraci vozidla v ČR platná od 01.01.2024

Dne 1.1.2024 vešla v platnost úprava českého zákona 56/2001 Sb. o podmínkách provozu vozidel na pozemních komunikacích týkající se registračních dokladů vozidel vydávaných v ČR.

- Dnem 01.01.2024 bylo zrušeno vydávání nových Osvědčení o registraci vozidla část II (technický průkaz). Místo dosavadních dvou dokladů je vozidlům vydáván pouze jeden doklad, a to **Osvědčení o registraci vozidla** (dále jen ORV). Změna současně zvyšuje počet jednotlivých položek uvedených na osvědčení a zavádí jeho novou podobu (viz příloha 1).
- Potřebné technické údaje o vozidle, které nejsou uvedeny na ORV lze dohledat na webové stránce [Datová kostka \(dataovozidlech.cz\)](https://dataovozidlech.cz) – oddíl *Vyhledání vozidla* (pouze v českém jazyce).
- Možné situace při přeregistraci vozidel registrovaných v ČR:

A. Vozidlo registrované v České republice po datu 01.01.2024 a následně odhlášené z českého registru silničních vozidel je vybaveno pouze 1 ORV a registrační značku s omezenou platností pro vývoz do jiného státu (vzor viz příloha 4).

Při podání žádosti o přeregistraci v zahraničí majitel vozidla předloží pouze nové ORV a registrační značku s omezenou platností pro vývoz do jiného státu.

B. V případě vývozu vozidla registrované po datu 01.01.2024 bez ukončení registrace v českém registru silničních vozidel (podle směrnice 1999/37) je vozidlo vybaveno pouze 1 ORV a registrační značkou vydanou registračním úřadem.

Při podání žádosti o přeregistraci v zahraničí majitel vozidla musí předložit ORV a českou registrační značku.

C. V případě odhlášení vozidla registrovaného před datem 01.01.2024 z českého registru silničních vozidel český registrační úřad odebere jak původní osvědčení o registraci vozidla (tj. ORV I a ORV II.-vzory v příloze 2 a 3 /vydaná straší ORV I a ORV II rovněž zůstávají platná/), tak původní registrační značku a vydají nové ORV a registrační značku s omezenou platností pro vývoz do jiného státu.

Při podání žádosti o přeregistraci v zahraničí majitel vozidla předloží pouze nové ORV a registrační značku s omezenou platností pro vývoz do jiného státu.

D. V případě vývozu vozidla registrované před datem 01.01.2024 bez ukončení registrace v českém registru silničních vozidel (podle směrnice 1999/37) je majitel vozidla povinen předložit obě české osvědčení o registraci vozidla (ORV I a ORV II) a českou registrační značku.

The Czech Republic issues only one registration document from 1.1.2024

The registration documents issued so far remain valid and will be replaced only in case of registration operations after 1.1.2024.

Specimen Vehicle Registration Certificate

Face side



Reverse side



The vehicle registration certificate contains protective elements (watermark and changing colour of the lime leaf at different viewing angles), is laminated with a protective film and its size is 105 x 75 mm.

Thus, a vehicle registered in the Czech Republic until 31.12.2023 may have either one document (vehicle registration certificate) or two documents (vehicle registration certificate part I and vehicle registration certificate part II if registered before 01.01.2024) after 1.1.2024.

Explanations:

Page 1

- A VEHICLE REGISTRATION PLATE
- B 1st VEHICLE REGISTRATION DATE / IN THE CZECH REPUBLIC (CR)
- C.1. A C.1.2 OPERATOR (SURNAME AND FIRST NAME / BUSINESS NAME) / DATE OF BIRTH / ID NUMBER
- C.1.3 ADDRESS OF RESIDENCE / REGISTERED OFFICE
- C.2.1.A C.2.2 OWNER (SURNAME AND FIRST NAME / BUSINESS NAME) / DATE OF BIRTH / ID NUMBER

Page 2

- D.1 FACTORY BRAND
- D.2 TYPE, VARIANT, VERSION
- D.3 TRADE MARK
- E VEHICLE IDENTIFICATION NUMBER (VIN)
- 1. TYPE OF VEHICLE
- K TYPE APPROVAL NUMBER
- WEIGHT (kg): F.1 LARGEST TECHNICALLY PERMISSIBLE
- F.2 PERMITTED
- G OPERATIONAL
- F.3 KITS
- P.1 DISPLACEMENT (cm³)
- P.2/P4 MAX. POWER (KW) / REVOLUTIONS (min⁻¹)
- P.3 FUEL
- S.1 / S.2 NUMBER OF SEATS / STANDING
- Q POWER/WEIGHT RATIO (kW.kg⁻¹)
- T TOP SPEED (km.s⁻¹)
- V.8 COMBINED FUEL CONSUMPTION
- V.9 EMISSION LIMIT NUMBER
- PERMITTED TRAILER WEIGHT (kg): O.1 BRAKED
- O.2 UNBRAKE
- J VEHICLE CATEGORY
- H VALID UNTIL
- OTHER RECORDS

Vehicle registration certificate part I - issued until 31.12.2023

Document description

- Specimen – on next page
- This vehicle registration certificate is in the form of a laminated registration card measuring 105 mm x 75 mm.
- The vehicle registration certificate (certificate part 1) contains information about the vehicle operator and its owner on the front side. The reverse side of this document is reserved for the technical parameters of the vehicle.
- The protective elements are:
 - watermark
 - variable colours of linden leaves (blue and green) at different viewing angles
 - hologram
 - The colours are dull, pastel, to make it difficult to forge documents on colour copiers.
 - Predominant colours are pastel light yellow and pastel red (pink) with black and blueprint.
 - Filling in the sections of the technical license certificate (certificate part 1) is done with a computer printer or a typewriter.

Only the authorized authorities of the Czech Republic may verify the authenticity of all technical certificates and the information contained therein. If the competent state authorities of other countries have doubts about the authenticity of vehicle registration documents issued by the Czech Republic, these authorities must provide the Ministry of Transport with either the original document to verify the authenticity of the document, or these authorities must provide at least a photocopy of the document to verify the correctness of the data contained in document listed.

The Ministry of Transport points out that, regarding the laws in force in the Czech Republic, it cannot forward certain information from the document (e.g., series and document number) to a foreign state authority (e.g., name, surname and residence address of the vehicle operator), which in its application the foreign state authority will not mention the verification of the correctness of the data.

Exceptions to this rule are situations in which the Czech Republic is bound by an international treaty.

Subjects under private law (individuals and legal entities) are completely excluded from the process of verifying the authenticity of the document or verifying the correctness of the data contained in the document, except for the exceptions provided by Czech laws.

The request for verification of the authenticity of the document, or verification of the correctness of the data stated in the document, must always be submitted to the Ministry of Transport in writing to the address:

Ministerstvo dopravy
Odbor provozu silničních vozidel
nábřeží Ludvíka Svobody 12
110 15 Praha 1
Česká republika

or

by email to:

posta@mdcr.cz

Face side



Reverse side



Czech Vehicle registration certificate part II (Technical certificate)

Document description:

- Specimen – *next two pages*
- The dimensions of the document are 210 mm x 445 mm.
- The technical license (certificate part II) contains information about the vehicle operator and its owner on the front side. The reverse side of this document is reserved for the technical parameters of the vehicle
- The colours are dull, pastel, to make it difficult to forge documents on colour copiers.
- The predominant colour is pastel blue grey (to purple) and orange pastel. This modern type of Part 2 Certificate (Technical Certificate) has various security features such as contemporary bank notes. The protective elements are:
 - watermark
 - woven metal strip with fired "Czech Republic" micro-inscription
 - intaglio
 - changing colours of linden leaves (blue and green) at different angles of view
 - hologram
 - fight
 - CZ letterpress
- The sections of the technical certificate (certificate part 2) are filled in with a computer printer or a typewriter

If the competent state authorities of other countries have doubts about the authenticity of vehicle registration documents issued by the Czech Republic, these authorities must provide the Ministry of Transport of the Czech Republic with either the original document to verify the authenticity of the document, or these authorities must provide at least a photocopy of the document to verify the correctness of the data that are listed in the document.

The Ministry of Transport points out that, about the laws in force in the Czech Republic, it cannot forward certain information from the document (e.g., series and document number) to a foreign state authority (e.g., name, surname, and address of residence of the vehicle operator), which in its application the foreign state authority will not mention the verification of the correctness of the data.

Exceptions to this rule are situations in which the Czech Republic is bound by an international treaty.

Subjects under private law (individuals and legal entities) are completely excluded from the process of verifying the authenticity of the document or verifying the correctness of the data given in the document, except for the exceptions provided by Czech laws.

The request for verification of the authenticity of the document, or verification of the correctness of the data stated in the document, must always be submitted to the Ministry of Transport in writing to the address:

Ministry of Transport of the Czech Republic
 Department of road vehicle operation
 Ludvík Svoboda Embankment 12
 110 15 Prague 1
 Czech Republic

or by email to the address:

posta@mdcr.cz

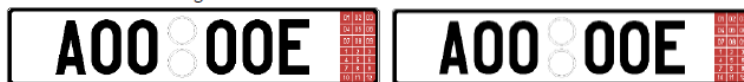
From 01.01.2024 this certificate is not issued.

Face side

Reverse side

Tables of license plates for vehicles that are deregistered from the vehicle register of the Czech Republic for permanent export abroad

- Type 161 passenger, cargo, bus, special vehicle – export
- 2 tables measuring 520 mm x 110 mm – black letters and numbers on a white background



- Type 162 trailer, tractor, self-propelled work machine - export**
 - 1 table measuring 520 mm x 110 mm – black letters and numbers on a white background



- Type 163 cargo, bus, special vehicle – export**
 - 1 table measuring 520 mm x 110 mm and 1 table measuring 340 mm x 200 mm – black letters and numbers on a white background



- Type 164 trailer - export**
 - 1 table measuring 340 mm x 200 mm - black letters and numbers on a white background



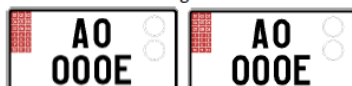
- Type 165 passenger vehicle - export**
 - 2 tables measuring 280 mm x 200 mm – black letters and numbers on a white background



- Type 166 passenger vehicle – export**
 - 1 table measuring 520 mm x 110 mm and 1 table measuring 280 mm x 200 mm - black letters and numbers on a white background



- Type 175 passenger vehicle – export**
 - 2 tables measuring 320 mm x 160 mm - black letters and numbers on a white background



- Type 176 passenger vehicle – export**
 - 1 table measuring 520 mm x 110 mm and 1 table measuring 320 mm x 160 mm - black letters and numbers on a white background



- Type 177 tractor, self-propelled work machine and their trailer – export**
 - 1 table measuring 280 mm x 200 mm - black letters and numbers on a white background



- Type 178 motorcycle - export**
 - 1 table measuring 200 mm x 160 mm – black letters and numbers on a white background

